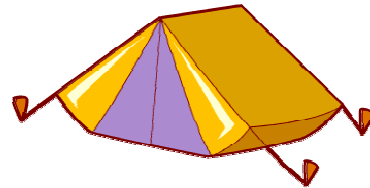
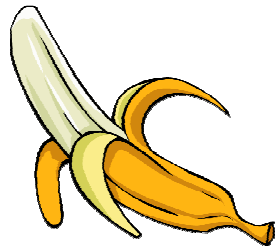
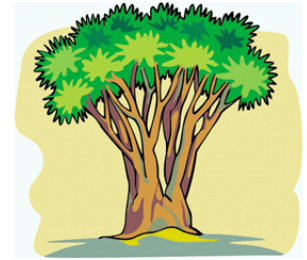
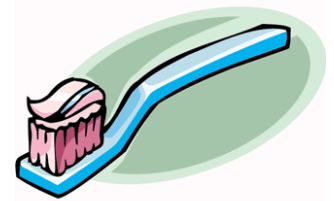
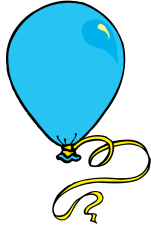
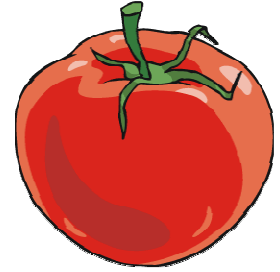
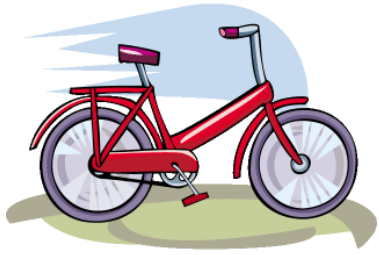


©the classroomkit.com





©theclassroomkit.com



T
a
k
e
z

Goal:

To identify the beginning sound in words and match to the letter symbol.

Instructions:

Shuffle cards and place in a bag.

Take turns to pull a card and say aloud what the picture is, e.g. "moon".

Place the card on the appropriate place on the game board whilst saying the letter **sound**.

When a 2nd card is placed on a letter, the player with the 2nd card, takes both cards.

The winner is the player with most cards after all cards have been played.

Suggestion: The matching word may be printed on the back of each card to reinforce learning and allow self-correction.

key kite king koala kangaroo kiwi kettle kayak



moon mouse monkey map milk mask mittens
mushroom



ball banana bell book balloon boomerang bear
bike



tiger toast turtle television/TV tomato tree
toothbrush tent

